



Decision With Insight

Voyage Manager (VM) is a holistic application used to manage voyage operations and to calculate and maintain financial information during a voyage. The application helps the Operations department to obtain daily reports for a given voyage and track the expenses involved. The application calculates all real-time expenses, payments and cash flows, and can also track consignment, bunker purchase, speed, invoicing, and conduct demurrage, or despatch calculations.

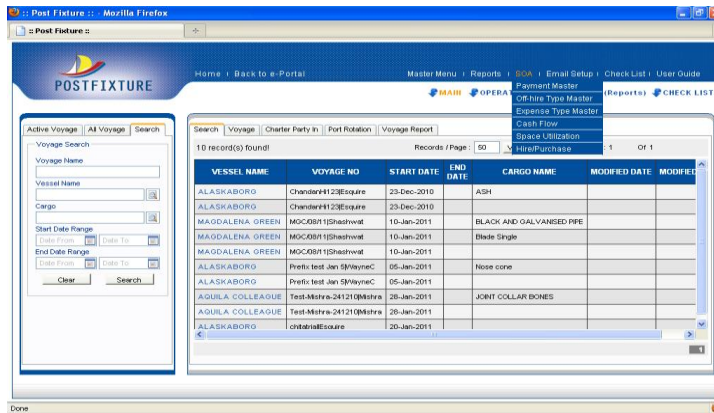
VOYAGE MANAGER

- ➔ Complete voyage information – charter party, port rotation, noon reporting, port reports, lay time, and more
- ➔ Rich Geographic Information System (GIS) based Map-viewer showing current vessel location, voyage history, voyage route and daily reports
- ➔ Invoicing & Lay time calculations along with port expenses, bunkering information, cash flow statements, space utilization, off-hire and many more financial reports
- ➔ Export/import to/from Microsoft Excel – voyage information (i.e. DNR), lay time information, bunkering and more.
- ➔ Extensive master list of agents, cargo, port, shipper, bunker suppliers, receiver, currency exchange rates and many more

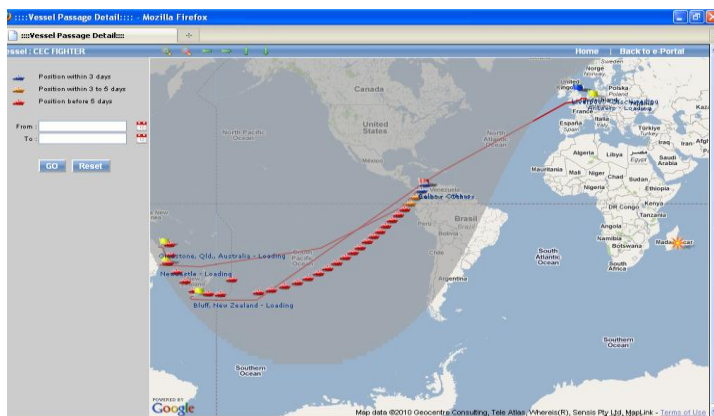
How beneficial is it?

- ➔ Having Voyage Manager gives an edge over keeping a track of voyage expenses & cargo in a competitive environment
- ➔ Secure data sync: All branches share the updates through secure data communication among users for every transaction. This ensures better stability during times of low Internet connectivity and gives all users a 360-degree view of proposed voyages
- ➔ Exhaustive features: export/import to/from MS Excel, PDF; restoring deleted data, easy sync. with all users, invoicing and operational financial data recording, master list of vessels/agents/cargo/Port/shipper/etc., access privileges/restrictions, lay time, Noon reporting and many more.
- ➔ Make quick and well-founded decisions: map viewer and vessel tracker functions help you make quick and sound decisions as information on vessel location and planned voyages is available to users without the need to gather information manually
- ➔ Holistic system: VM is integrated with Voyage Planner and Vessel Tracker

- ➔ User driven simple data analysis and dashboard
- ➔ Client-server architecture with central database and easy auto parsing of data received from vessels
- ➔ Easy Management Information System (MIS) and integration with third party software



Voyage Manager



Map Viewer with DNR information



THE SOLUTION YOU NEED

- ➔ Keep track of expenses & cargo: VOM helps you keep track of all voyage-related expenses and cargo in a competitive environment
- ➔ Get a 360-degree view of operations: VM is a web-based application that integrates with other modules such as Noon reporting, vessel position, and Voyage Planner. This gives the user a 360-degree view of real operations and their impact
- ➔ Support sound decisions: Extra features such as the map viewer and vessel tracker help you take quick and sound decisions; information on vessel location and planned voyages enables the users to get an overview of voyages without being delayed by human interaction
- ➔ See the complete picture: It offers Geographic Information System (GIS) based vessel and consignment tracker with drill-down features. This enables the user to drill down in the data to easily reach the desired level of information
- ➔ Keep track of financial data: The application obtains financial data, which enables users to keep track of financial data such as statement of accounts, cash-flows, invoices, lay time calculations, and statement of facts
- ➔ Validate entries: The application automatically checks the integrity of entries and reports back if the numbers are unusual. This ensures greater data integrity as human errors are easily detected
- ➔ Flexible data entry: Manual as well as automatic data capture from MS excel sheets, xml files, and reporting, with editable and user defined reports. Auto parsing of data coming from vessels as email attachments.
- ➔ Based on a Service-Oriented Architecture (SOA): SOA helps organizations respond faster and more cost-effectively to changing market conditions, by integrating all services in a voyage fixture such as chartering dept., finance dept., operations dept. in one single process
- ➔ Extensive data and reporting: Exhaustive reporting and analysis of data such as DNRs, cash flow, hire/purchase, vessel/cargo tracking, lay time, invoice, auto alerts, animations, voyages, User-based